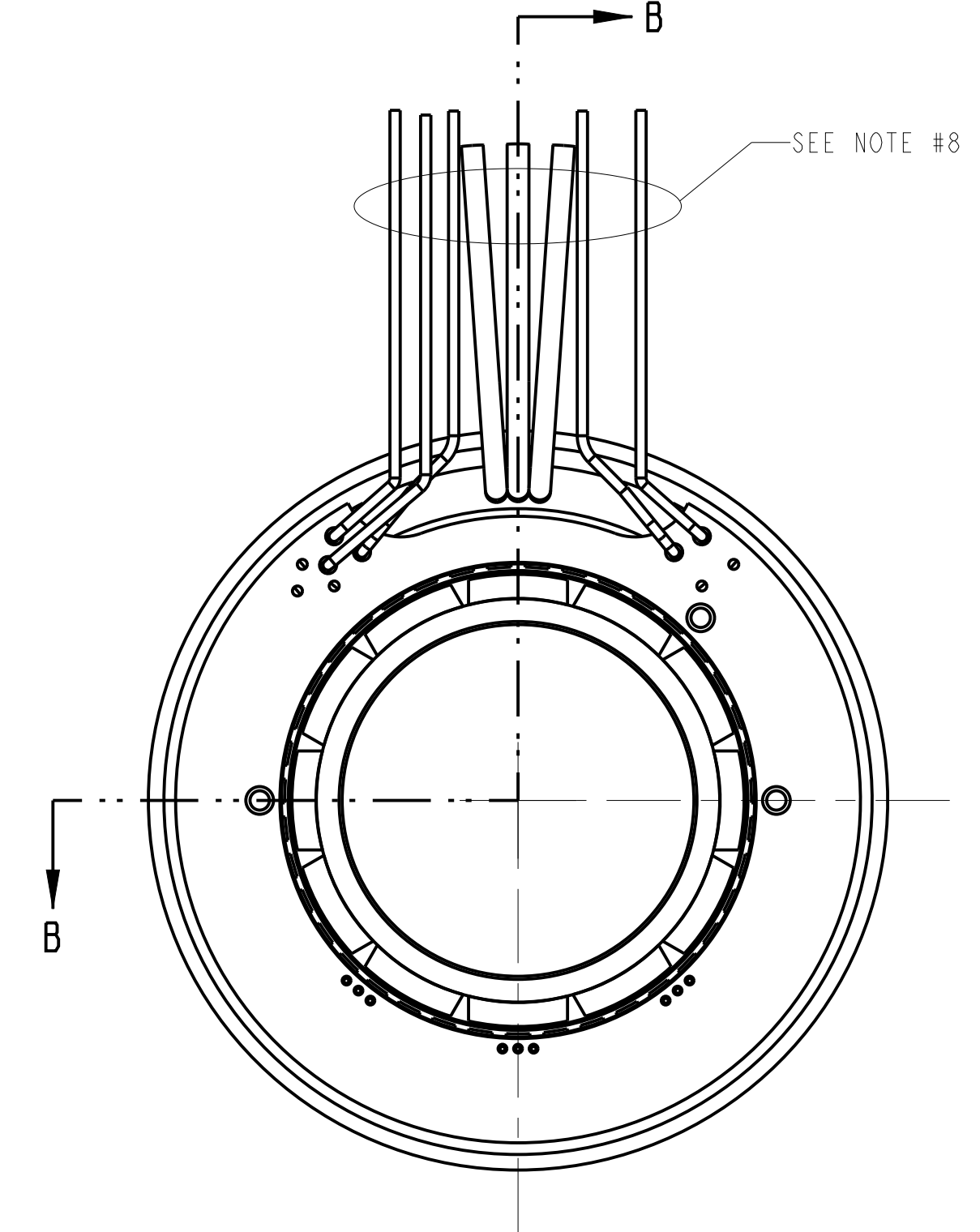
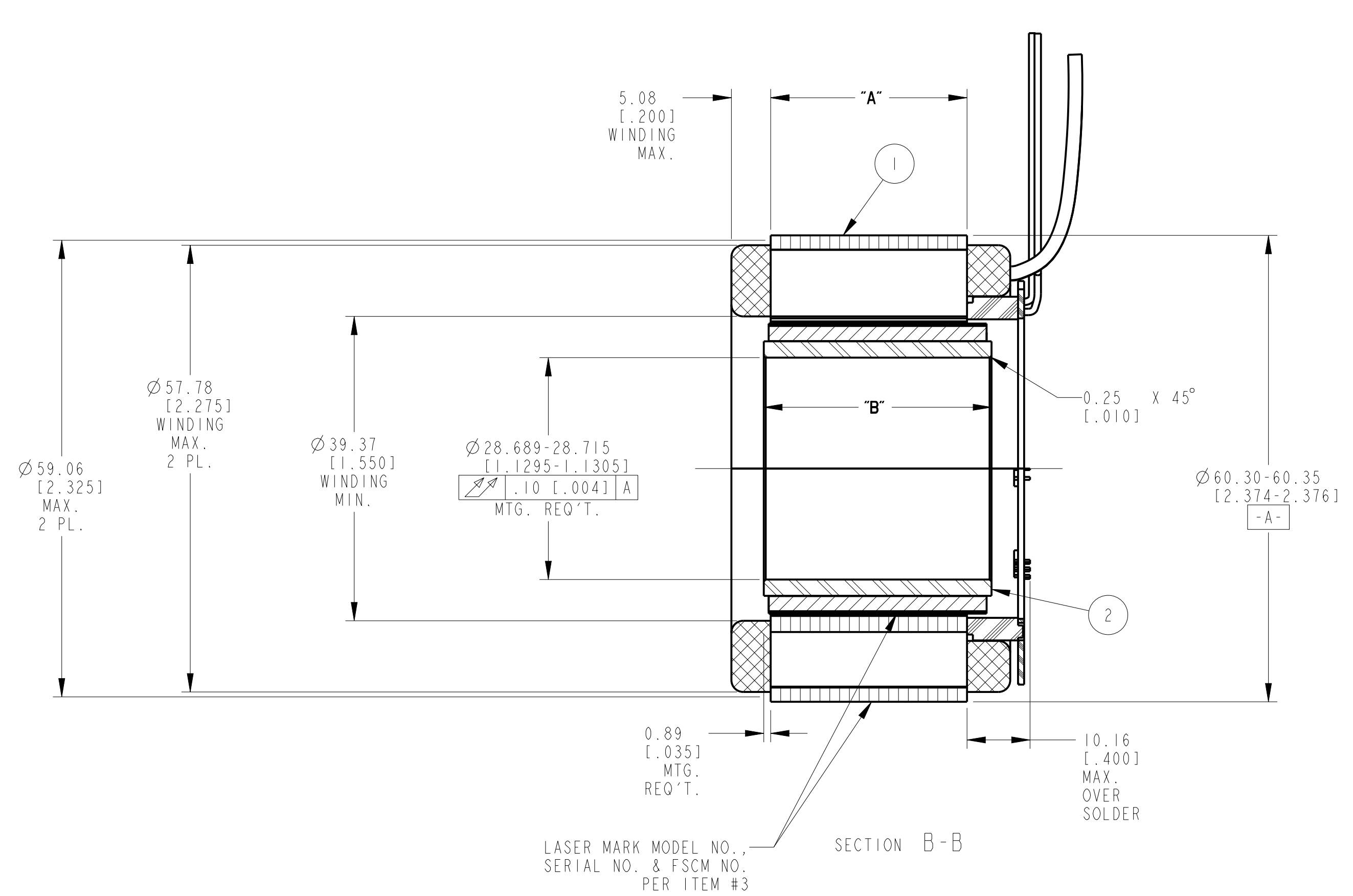


REV		A		I	
960631					
REVISION					
REV	ECN NO.	DESCRIPTION	DATE	APPROVED	
A	R01.16804	SEE ECO	ALM 3/10/15	LW	

- NOTES:
1. MOTOR SUPPLIED AS TWO SEPARATE COMPONENTS: ARMATURE & SENSOR ASSEMBLY AND FIELD ASSEMBLY
 2. FOR A C.W. ROTATION, AS VIEWED FROM LEAD END, ENERGIZE PER EXCITATION SEQUENCE TABLE.
 3. R= 1.5K OHMS APPROX. (CUSTOMER SUPPLIED)
 4. V-AB, V-BC AND V-CA IS BACK EMF OF MOTOR PHASES AB, BC AND CA RESPECTIVELY, ALIGNED WITH SENSOR OUTPUT AS SHOWN FOR C.W. ROTATION ONLY.
 5. MOUNTING SURFACE IS BETWEEN $\phi 59.06$ [2.325] AND $\phi 60.35$ [2.376] ON BOTH SIDES.
 6. SENSORS SET FOR BI-DIRECTIONAL ROTATION.
 7. DIMENSIONS IN BRACKETS [] ARE IN INCHES AND ARE FOR REFERENCE ONLY.
 8. MIN. BEND RADIUS FOR MOTOR LEADS IS 6.90 [1.27]. MIN. BEND RADIUS FOR SENSOR LEADS IS 3.90 [1.15].

MOTOR LEADS:
 #20 AWG TEFLON, COATED, PER MIL-W-22759/11, 3 LEADS, 400 mm [15.75"] MIN. LONG EACH, 1-RED, 1-WHITE & 1-BLACK

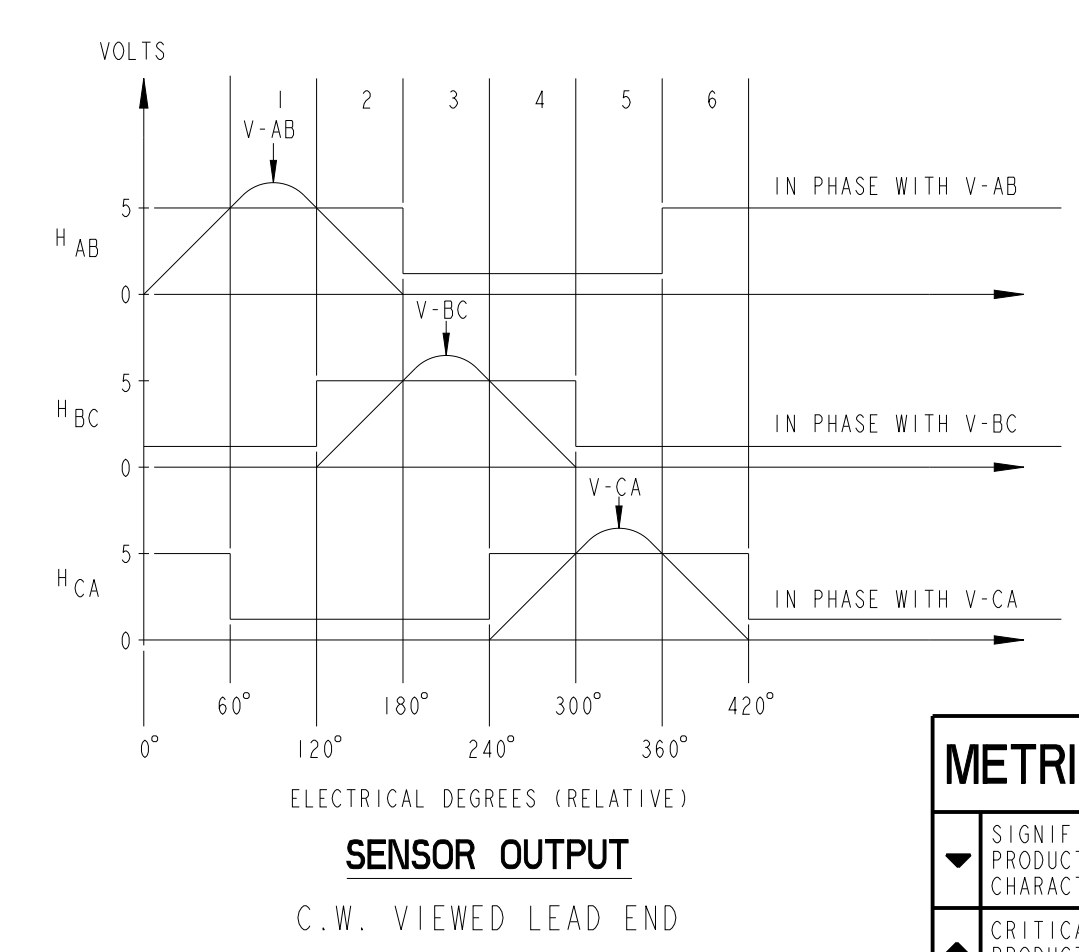
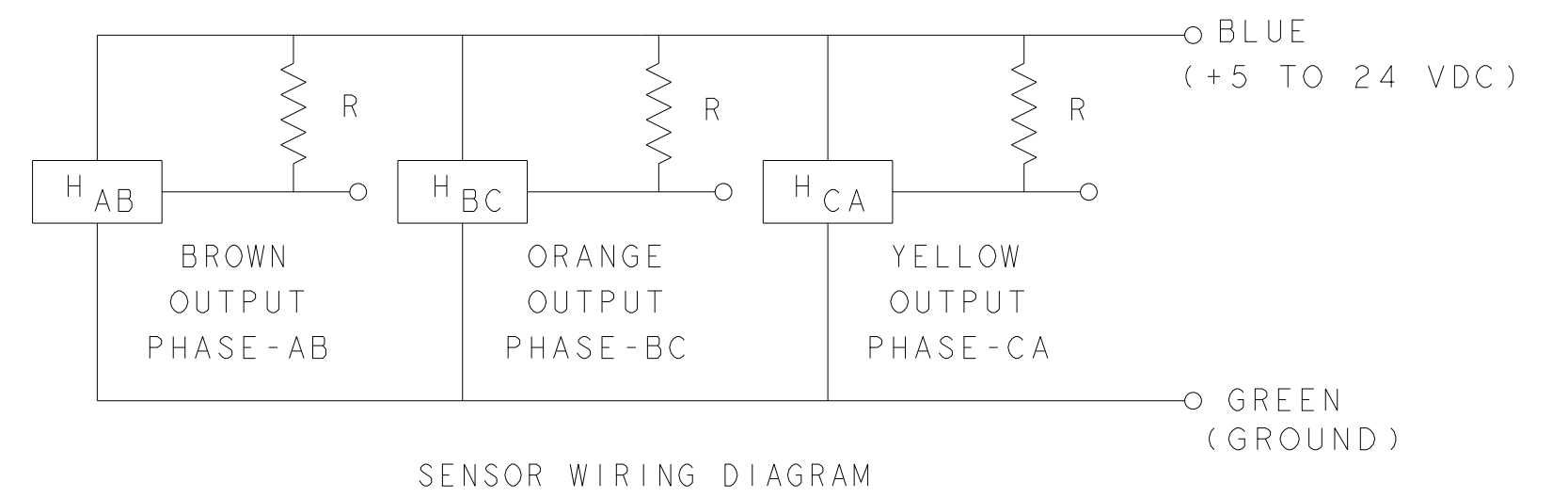
SENSOR LEADS:
 #26 AWG, TYPE "ET", TEFLON, COATED PER MIL-W-16878, 5 LEADS, 400 mm [15.75"] MIN. LONG EACH, 1-BLUE, 1-BROWN, 1-GREEN, 1-ORANGE & 1-YELLOW



PHASE "A"	RED LEAD
PHASE "B"	WHITE LEAD
PHASE "C"	BLACK LEAD

MODEL NUMBER	ARMATURE & SENSOR ASSY.	FIELD ASSY.	"A" DIM.	"B" DIM.
TBMS-6013	960632/013	960633/013	12.45-12.95 [0.490-.510]	16.76 [0.660]
TBMS-6025	960632/025	960633/025	25.15-25.65 [0.990-1.010]	29.46 [1.160]
TBMS-6051	960632/051	960633/051	50.55-51.05 [1.990-2.010]	54.86 [2.160]

STEP	RED	WHITE	BLACK
1	(+)	(-)	(-)
2	(+)	(+)	(-)
3	(-)	(+)	(-)
4	(-)	(-)	(+)
5	(+)	(-)	(+)
6	(+)	(+)	(+)



ATTENTION
 Static-Sensitive Devices
 Handle Only at
 Static-Safe Workstations

THIS DOCUMENT IS ONLY FOR USE BY THE INTENDED RECIPIENT AND CONTAINS KOLLMORGEN CONFIDENTIAL INFORMATION

Pro/E Instance Name: TBMS-60XX-960631
 Pro/E Drawing Name: 960631
 Pro/E Model Type: ASSEM
 Pro/Engineer Drawing

3	AR	IM-2709	MARKING PROCEDURE
2	I	SEE TABLE	FIELD ASSEMBLY
1	I	SEE TABLE	ARMATURE AND SENSOR ASSEMBLY
ITEM	QTY	IDENTIFYING NO.	DESCRIPTION
LIST OF PARTS			
KOLLMORGEN			501 MAIN STREET RADFORD, VIRGINIA 24141
OUTLINE TBMS-60XX-X00			
UNLESS OTHERWISE SPECIFIED: REMOVE ALL SHARP BURRS AND BREAK ALL SHARP EDGES X DECIMAL PLACES ±.4 [0.015] XX DECIMAL PLACES ±.13 [0.005] ANGULAR DIMENSIONS ±1°		FSCM	
DO NOT SCALE DRAWING; USE DIMENSIONS ONLY ALL DIMENSIONS ARE IN MILLIMETERS DIMENSIONS IN BRACKETS [] ARE IN INCHES AND ARE FOR REFERENCE ONLY INTERPRET GEOMETRIC SYMBOLS PER ANSI Y14.5M-1982		DESIGNED BY M. STONE 5-8-14	DATE 22-Jan-14
SIGNIFICANT PRODUCT CHARACTERISTIC		CREATED BY A. GARLICH 5-19-14	REV A
CRITICAL PRODUCT CHARACTERISTIC		SCALE: 2:1	JOB NO.: SHEET 1 OF 1