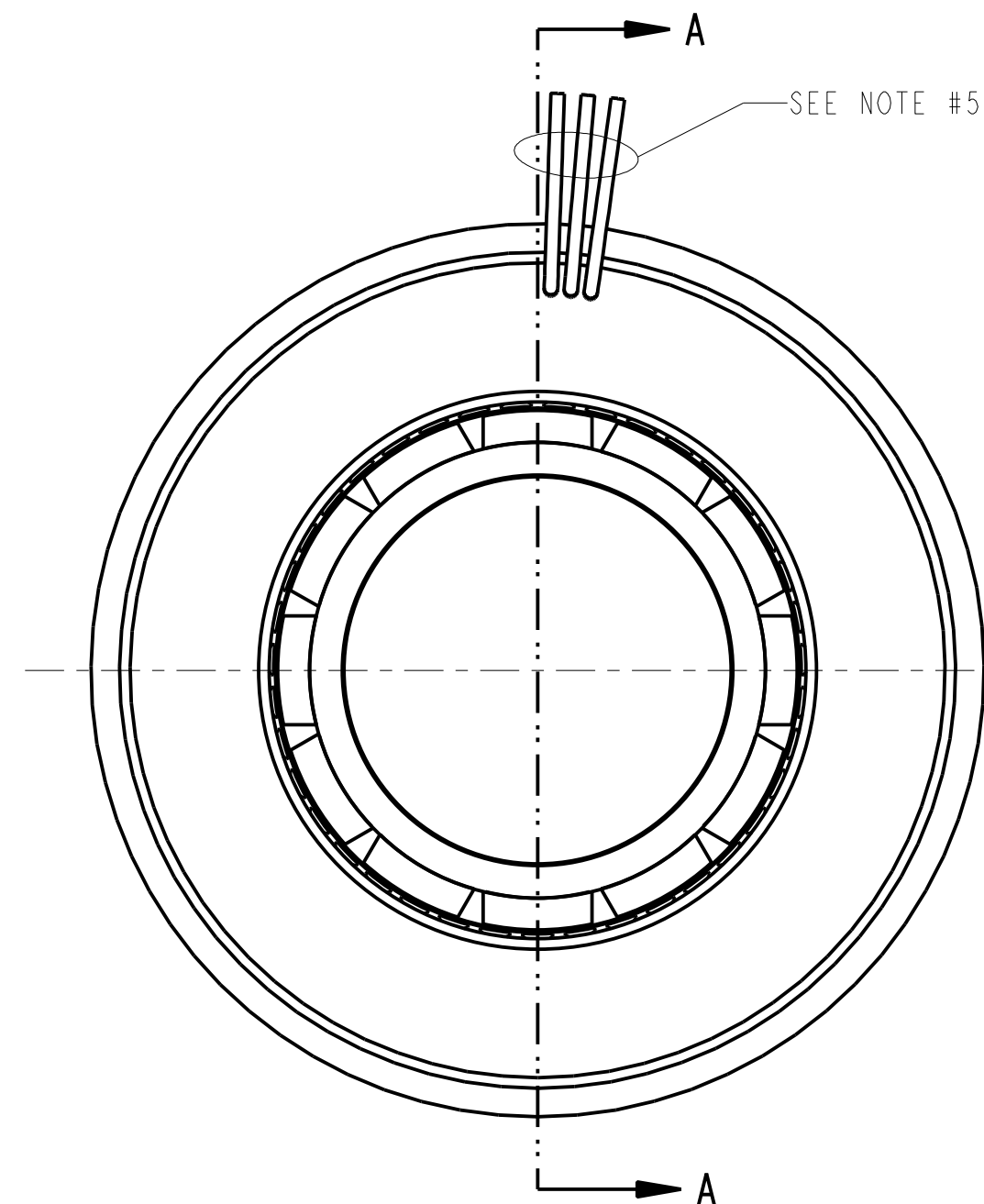
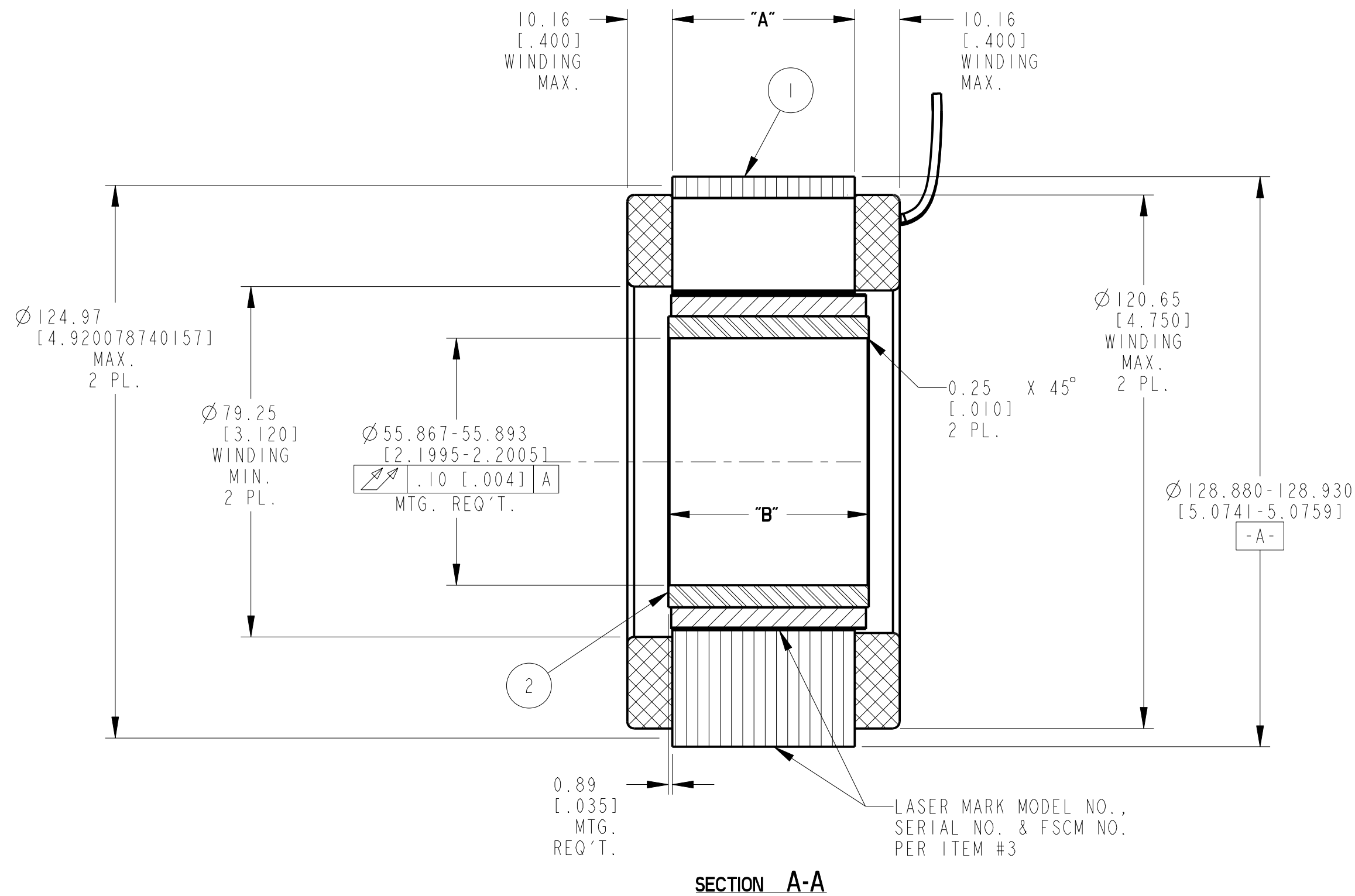


NOTES:

- MOTOR SUPPLIED AS TWO SEPARATE COMPONENTS:
ARMATURE ASSEMBLY AND FIELD ASSEMBLY
- FOR A C.W. ROTATION, AS VIEWED FROM LEAD END,
ENERGIZE PER EXCITATION SEQUENCE TABLE.
- MOUNTING SURFACE IS BETWEEN $\phi 124.97$ [4.920] AND 128.91 [5.075] ON BOTH SIDES.
- DIMENSIONS IN BRACKETS [] ARE IN INCHES AND ARE FOR REFERENCE ONLY.
- MIN. BEND RADIUS FOR MOTOR LEADS IS 7.62 [0.30].

MOTOR LEADS:
#16 AWG TEFLON, COATED, PER
MIL-W-22759/11, 3 LEADS, 400 mm [15.75"] MIN.
LONG EACH, 1-RED, 1-WHITE & 1-BLACK

REVISION				
REV	ECN NO.	DESCRIPTION	DATE	APPROVED



MODEL NUMBER	ARMATURE ASSY.	FIELD ASSY.	"A" DIM.	"B" DIM.
TBM-12913	960634/013	960638/013	13.08-13.59 [0.515-0.535]	17.40 [0.685]
TBM-12941	960634/041	960638/041	41.02-41.53 [1.615-1.635]	45.34 [1.785]
TBM-12955	960634/055	960638/055	54.36-54.86 [2.140-2.160]	58.67 [2.310]

MOTOR WIRING DIAGRAM	
PHASE "A"	RED LEAD
PHASE "B"	WHITE LEAD
PHASE "C"	BLACK LEAD

STEP	RED	WHITE	BLACK
1	+	-	
2	+		-
3		+	-
4	-	+	
5	-		+
6		-	+

EXCITATION SEQUENCE TABLE

THIS DOCUMENT IS ONLY FOR USE BY THE INTENDED RECIPIENT AND CONTAINS KOLLMORGEN CONFIDENTIAL INFORMATION

Pro/E Instance Name	TBM.129XX.960640
Pro/E Drawing Name	960640
Pro/E Model Type	ASSEM
Pro/Engineer Drawing	



METRIC DRAWING

<p>DO NOT SCALE DRAWING. USE DIMENSIONS ONLY. ALL DIMENSIONS ARE IN MILLIMETERS. DIMENSIONS IN BRACKETS [] ARE IN INCHES AND ARE FOR REFERENCE ONLY.</p> <p>INTERPRET GEOMETRIC SYMBOLS PER ANSI Y14.5M-1982</p>	<p>DATE: 23-Jan-14</p> <p>DESIGNED BY: M. STONE</p> <p>CHECKED BY: A. GARLICH</p> <p>APPROVED BY: A. GARLICH</p>
---	--

ITEM	QTY	IDENTIFYING NO.	DESCRIPTION
3	AR	IM-2709	MARKING PROCEDURE
2	I	SEE TABLE	FIELD ASSEMBLY
1	I	SEE TABLE	ARMATURE ASSEMBLY

LIST OF PARTS		KOLLMORGEN		501 MAIN STREET RADFORD, VIRGINIA 24141	
OUTLINE TBM-129XX-X00					
FSCM 11384		SIZE C	DWG. NO. 960640	REV -	
SCALE: 1:1		JOB NO.:		SHEET 1 OF 1	

DWG. NO. 960640