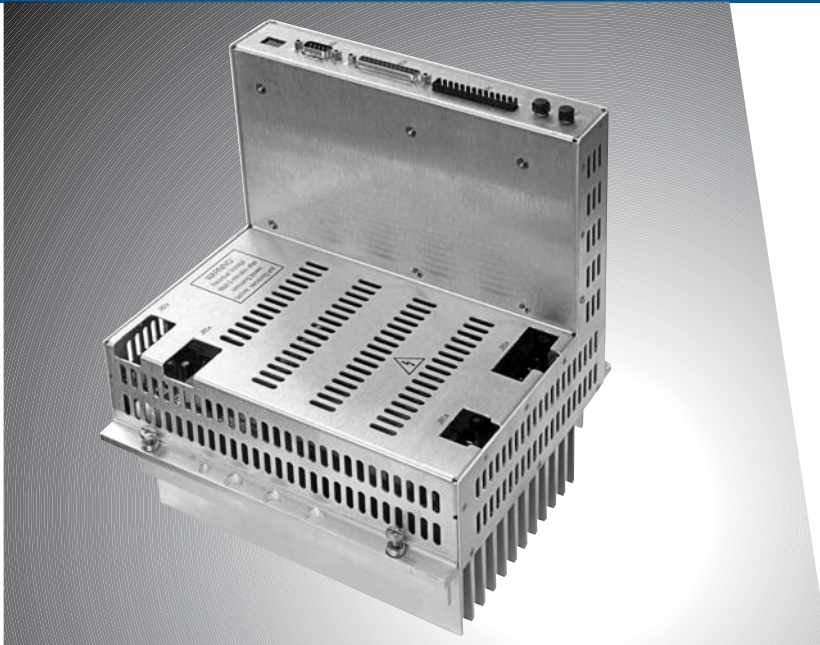


# High Voltage Amplifier

[www.DanaherMotion.com](http://www.DanaherMotion.com)



## DESCRIPTION

The L-shape high voltage high power (18 kW) amplifier is a high-performance, fully-featured digital servo drive, for use in applications requiring connection to high voltage. It comprises high power stage with the CD Series 5 control board, thus providing the CD Series 5 feature set.

## RATIONALE

- High power drives for extending existing robotics product line.
- Customer specific mechanical shape to accommodate to the customer's cabinet.
- SERCOS communication.

## SOLUTION

- One high voltage power supply and six high voltage L-shape amplifiers per system, that fit into customer cabinet.
- Mechanical shape per customer request.
- Design new power stage and use the well known digital board of the CD series 5.
- Short development cycle.

## Applications

- Robotics, Machine tools, Electronic assembly.

## FEATURES

### Operation Modes

- 9kW, 15 kW & 18 kW.
- Feedback Sine Encoder, 5 V Stegmann Hiperface, Resolver or encoder
- Servo Control Fully digital current, velocity and position loops
- Advanced patented sinewave commutation technology provides smooth, precise low- speed control as well as high- speed performance
- Accurate torque control due to precision balanced current loops with closed loop sensors
- Patented torque angle control enhances motor performance
- Velocity loop bandwidths up to 400 Hz
- Self- tuning velocity loop algorithm
- Reference Command SERCOS operation.
- Motion Options Point- to- point, incremental or absolute
- Homing functions

### Configurable I / O

- 3 digital inputs and 1 digital output, configurable to a variety of functions
- Analog output for monitoring various parameters
- Robust Design Self- protecting power modules
- Full protection against short circuit, over- voltage, under- voltage, motor and drive over- temperature, over- current and feedback loss
- Flexible current foldback protection

## Power Supply Rating

AC Input 3 Phase [VAC]	Output Continuous BUS voltage	Rated Output Continuous [kW]	Rated Output Peak [kW]
400	565	12	36

24 VDC @ 0.5 amp logic input supply, to separate from mains supply.

## L-shape Amplifier Rating

DC Input [VDC]	Output Continuous Current Per Phase [RMS/Phase] @ 60°C	Output Peak Current Per Phase [RMS/Phase]	Rated Output Continuous Power [kW]
565	15 amps	32 amp. (2 sec)	9
565	25 amps	65 amp (2 sec)	15
565	30 amps	84 amp 2 (sec)	18

24 VDC @ 0.5 amp logic input supply, to separate from mains supply.

## L-shape Amplifier Mechanical Dimensions

8.46" (height) X 8" mm (width) X 10.63" (length)