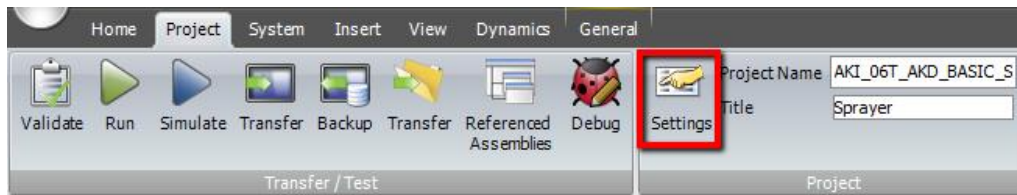


Size Conversion of KVB Projects

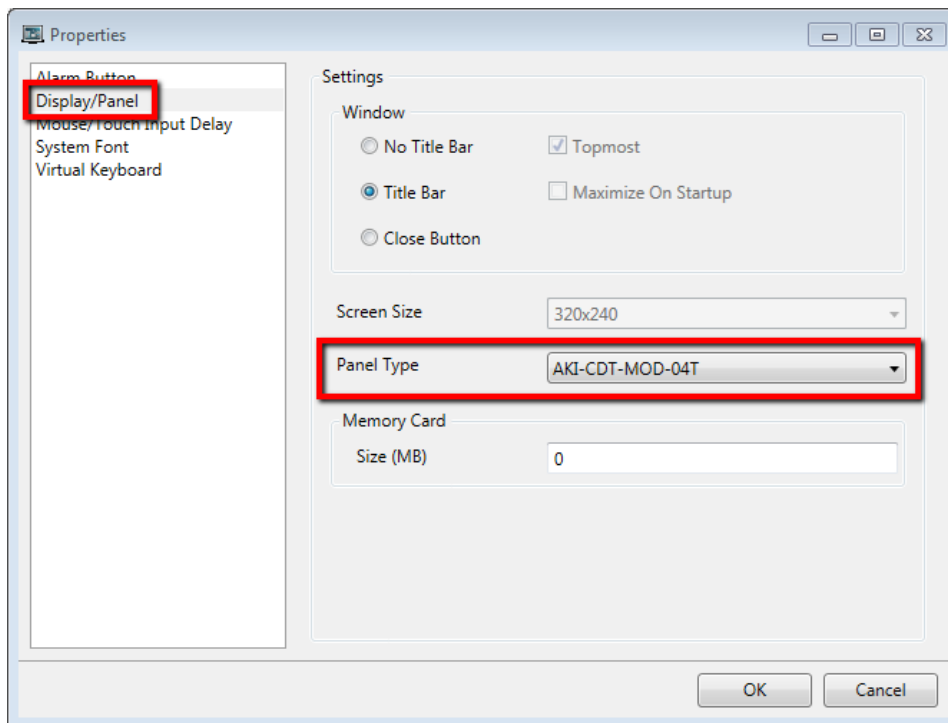
Overview

KVB projects can be converted from one panel size to another. It is simple to do, but it is irreversible. Best practice is to do a Save-As to make a backup of the project before converting it.

1. Go to the **Project** tab and click on **Settings**.



2. Click on **Display/Panel** and select the AKI model number of the panel you want to resize to.



3. Click **Ok**.