

Hazardous Location Performance



Explosion Proof Motors

UL, ATEX and IECEx Certified

KOLLMORGEN

A REGAL REXNORD BRAND

The Certifications You Need. The Performance You Demand.

Motors for use in hazardous locations must be engineered to prevent the ignition of potentially explosive atmospheres and must be certified by the responsible governing body in each region where the motor is used.

Kollmorgen offers motors certified to UL, ATEX and IECEx explosion proof standards, meeting regulatory requirements in countries around the world. Typical applications include mining, oil and natural gas refining, flour mills, grain elevators, textile mills, industrial paint booths and other environments subject to hazardous atmospheres where ignitable gases, dusts, fibers or flyings may be present.

Key safety features include motor enclosures capable of withstanding an internal explosion, flame paths that prevent any internal flame or spark from reaching the outside environment, and surface temperatures that never become hot enough to ignite hazardous materials, even when the motor is in an overload condition or when it is covered by a layer of hazardous dust.

All explosion proof motors are designed and built to Kollmorgen's uncompromising quality standards to ensure years of reliable operation in harsh and rugged industrial environments.

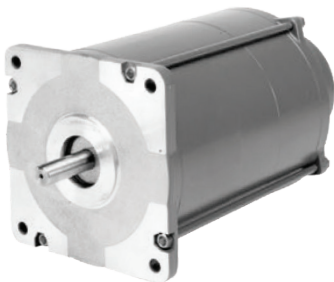
For complete details and specifications, and to order, visit www.kollmorgen.com/en-us/products/motors/explosion-proof



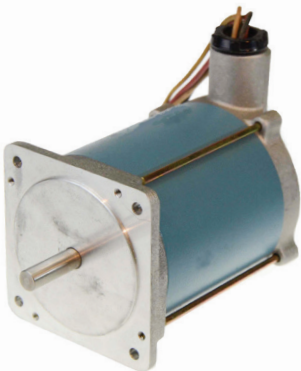
EB & EBH Series
Variable speed, dynamic load, brushless servo motors, 230 and 480 Vac



PMDC Series
Fixed speed, constant load, brushed permanent magnet DC motors, up to 180 Vdc




AC Synchronous Series
Fixed speed, constant load, brushless AC synchronous motors, 120 & 240 Vac, 50/60 Hz




Stepper MX Series
Variable speed, constant load, brushless stepper motors, up to 240 Vac

EB & EBH Series
Brushless Servo Motors



UL, File E120721
Class I, Divisions 1 & 2,
Groups C & D



ATEX, File ITS12ATEX17548X
(EB-80x excluded)
Ex II 2 G Ex d IIB T3 Gb -40°C ≤ Ta ≤ +40°C
IECEX ETL 12.0006X



EB and EBH servo motors offer superior torque density and high maximum speeds. The EB Series is available with a voltage range up to 230 Vac, while the EBH Series has a higher voltage range up to 480 Vac. Both series are available in speeds up to 7,500 rpm.

These motors include rugged resolver feedback, a built-in thermostat and Class F* insulation. They are ideally suited for use in applications that require highly dynamic motion, including variable speeds and varying loads, and in locations where flammable vapors or gases create a potentially hazardous environment.

EB Series

Frame Size	EB10x	EB20x	EB40x	EB60x	EB80x
Stack length	2,4,6	2,4,6	2,4,6	2,4,6	2,4,6
Windings	A,B	A,B,C,D	A,B,C,D	A,B,C,D	A,B,C
Rated voltage (Vrms)	230	230	230	230	230
Max cont. stall torque (Nm)*	2.22	6.44	18.6	44.8	108.5
Max peak torque (Nm)*	6.36	19.96	49.5	131.9	362
Max rated speed (rpm)	7500	7000	5000	4300	3000
Max rated power (hp)	2	4.53	9.6	14.2	21.2

* @ 40°C ambient

EBH Series

Frame Size	EBH12x	EBH22x	EBH42x	EBH62x
Stack length	2,4,6	2,4,6	2,4,6	2,4,6
Windings	A, B	A, B, C, D, E	A, B, C, D	A, B, C, D, E
Rated voltage (Vrms)	480	480	480	480
Max cont. stall torque (Nm)*	1.89	5.59	15.80	36.7
Max peak torque (Nm)*	6.35	20.2	49.5	126.0
Max rated speed (rpm)	7500	7000	5000	4500
Max rated power (hp)	1.57	4.0	7.89	11.56

* @ 40°C ambient

EB motors can be ordered in either cULus or ATEX/IECEX + cETLus configurations. EBH motors can only be ordered with ATEX/IECEX configurations. These configurations, and their corresponding certifications, are mutually exclusive. UL configurations do not have ATEX/IECEX. ATEX/IECEX+cETLus have the ETL listed mark instead of the UL listed mark, using equivalent UL and CSA standards.

ATEX/IECEX certification is not available for EB80x sizes.

PMDC EP Series
Brush Permanent Magnet DC Motors



UL, File E56538
Class I, Divisions 1 & 2, Groups C & D
Class II, Division 1 & 2, Groups F & G
Class III, Divisions 1 & 2



PMDC EP (explosion proof) motors are brushed, permanent magnet DC motors for use in fixed-speed, constant load applications. They are available in a NEMA 56C frame size with a TENV (totally enclosed, non-ventilated) configuration and are capable of power ranges from 1/4 to 3/4 hp.

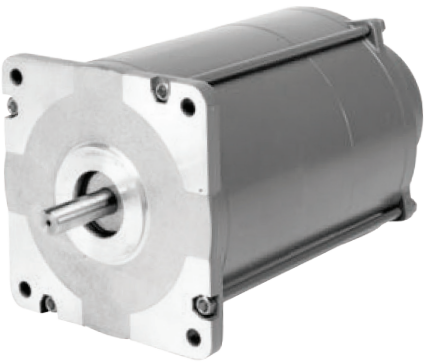
Anti-cog magnets allow for smooth low-speed operation, and these motors feature high overcurrent capacity and dynamic braking capabilities. A long, reliable operational life is ensured through Class H insulation; a polyester-impregnated armature; rugged, fused commutator; large sealed bearings; and long-life, constant-force brush springs with field-replaceable brushes.

PMDC EP Series

						Parameters						
	HP	Model Number	Product Code	NEMA	Enclosure	Continuous Current (A)	Continuous Torque (lb _f -in)	Peak Current (A)	Torque Constant (lb _f -in/A)	Resistance (Ω)	Inertia (lb _f -in ² /A)	Inductance (mH)
90V	1/4	EP3624-1434-7-56BC-CU	FGE0212	56C	TENV	2.6	9.0	52.0	4.07	2.63	4.0	10.5
	1/3	EP3632-1435-7-56BC-CU	FGE0242	56C	TENV	3.5	12.0	71.0	3.94	1.76	5.0	6.6
	1/2	EP3640-1436-7-56BC-CU	FGE0213	56C	TENV	4.7	18.0	87.0	4.24	1.03	6.4	5.1
	3/4	EP3758-5151-7-56BC-CU	FGE0248	56C	TENV	7.0	27.0	113.0	4.15	0.74	8.0	3.8
180V	1/4	EP3624-5269-7-56BC-CU	FGE0261	56C	TENV	1.3	9.0	26.0	8.10	10.50	4.0	51.80
	1/2	EP3644-5214-7-56BC-CU	FGE0262	56C	TENV	2.3	18.0	34.0	8.10	4.00	6.7	24.20
	3/4	EP3752-5215-7-56BC-CU	FGE0263	56C	TENV	3.3	27.0	38.0	8.10	3.10	11.4	17.40
12V	1/3	EP3620-1954-7-56BC-CU	FGE0243	56C	TENV	28.0	12.0	n/a	0.52	0.04	3.5	0.18
24V	1/3	EP3624-2757-7-56BC-CU	FGE0245	56C	TENV	13.4	12.0	n/a	1.02	0.16	4.0	0.66
	3/4	EP3648-4952-7-56BC-CU	FGE0244	56C	TENV	28.2	27.0	n/a	1.02	0.06	7.1	0.22

AC Synchronous Motors

 UL, File E32246
Class I, Divisions 1 & 2, Group D



These hazardous-duty synchronous motors provide torque up to 1,500 oz-in (1059 N-cm) and are available in NEMA 42 and 66 frame sizes (110 mm and 170 mm). They run at 72 rpm with a 120 Vac or 240 Vac, 60 Hz power supply, or 60 rpm with a 240 Vac, 50 Hz power supply.


120 Volt, 60 Hz, Single Phase, 72 rpm							Phase Shifting				
Model	Torque (min)		Load Inertia*		Amps	Wiring Diagram	Resistor			Capacitor (330VAC)	
	oz-in	N-cm	lb-in ²	kg-cm ²			Kit Number	Ohms	Watts	Kit Number	µF
X250	250	177	3	8.8	0.6	RC	201052-013	150	50	201053-010	6.5
X700	700	494	10	30	1.1	RC	201052-027	150	100	201053-032	12.5
X1100	1,100	777	9	26	3	RC	201052-025	100	160	201053-026	17.5
X1500	1,500	1,059	12	35	3	RC	201052-020	55	375	201053-014	30

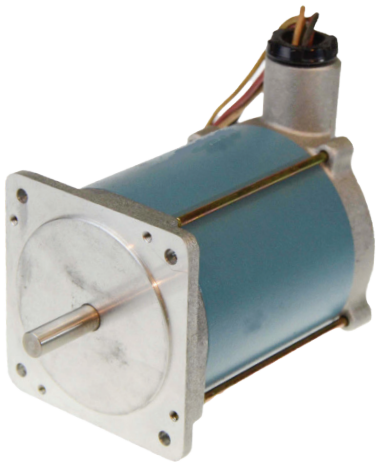
240 Volt, 60 Hz, Single Phase, 72 rpm							Phase Shifting				
Model	Torque (min)		Load Inertia*		Amps	Wiring Diagram	Resistor			Capacitor (330VAC)	
	oz-in	N-cm	lb-in ²	kg-cm ²			Kit Number	Ohms	Watts	Kit Number	µF
X252	250	177	3	8.8	0.4	RC	201052-015	500	50	201053-012	1.75
X1102	1,100	777	9	26	1.5	RC	201052-026	400	160	201053-028	4
X1502	1,500	1,059	12	35	1.5	RC	201052-018	250	200	201053-016	8
X1500	1,500	1,059	12	35	3	RC	201052-020	55	375	201053-014	30

240 Volt, 60 Hz, Single Phase, 60 rpm							Phase Shifting				
Model	Torque (min)		Load Inertia*		Amps	Wiring Diagram	Resistor			Capacitor (330VAC)	
	oz-in	N-cm	lb-in ²	kg-cm ²			Kit Number	Ohms	Watts	Kit Number	µF
X252	250	177	3	8.8	0.4	RC	201052-015	500	50	201053-012	1.75
X1102	1,100	777	9	26	1.5	RC	201052-026	400	160	201053-029	6
X1502	1,500	1,059	12	35	1.5	RC	201052-018	250	200	201053-019	9
X1500	1,500	1,059	12	35	3	RC	201052-020	55	375	201053-014	30

* This is the maximum rigidly attached load inertia the motor will reliably start. If the load is attached to the motor with a coupling that has a 5° flex, the motor can start loads up to seven times listed.

Stepper MX Series

 UL, File E32246 (MX9) and E120721 (MX11)
Class I, Divisions 1 & 2, Group D



Explosion proof MX Series stepper motors are available in NEMA 34 and 42 frame sizes (90 and 110 mm). They move in 200 steps per revolution (1.8° step angle) and provide minimum holding torques from 1.27 to 9.82 N-m (180 to 1,390 oz-in).

MX Series steppers are available with bipolar windings and a choice of stack lengths, providing speeds up to 3,000 rpm to meet the velocity demands of most high-torque applications.

MX9 Series Stepper Motors, NEMA 34

Motor Model Number	Config.			Holding Torque (2 phases on)	Rated Current/ Phase	Phase Resistance	Phase Inductance	Detent Torque	Thermal Resistance	Rotor Inertia	Weight	Shaft Loading	
												Radial Force	Axial Force
	Parallel	Series	Unipolar	oz-in (Nm) +/-10%	Amps DC	Ohms +/-10%	mH Typical	oz-in (Nm)	Mounted °C/Watt	oz-in-s² (kg-m² x 10³)	lb (kg)	lb (N)	lb (N)
MX91-FF-206U		•		180 (1.27)	3.0	1.0	10	2.0	2.9	0.0095 (0.067)	6.0 (2.7)	25 (111)	50 (222)
MX91-FF-402U		•			4.0	0.72	6.0						
MX91-FF-403U		•			6.0	0.18	1.5						
MX92-FF-206U		•		370 (2.61)	4.0	1.0	11	4.0	1.7	0.0174 (0.123)	9.0 (4.1)	25 (111)	50 (222)
MX92-FF-401U		•			7.0	0.28	2.8						
MX93-FF-206U				550 (3.88)	4.0	0.90	13	7.0	2.1	0.0265 (0.187)	11 (5.0)	25 (111)	50 (222)
MX93-FF-401U		•			5.0	0.65	8.0						
MX93-FF-402U		•			7.0	0.16	2.0						

MX11 Series Stepper Motors, NEMA 42

Motor Model Number	Config.			Holding Torque (2 phases on)	Rated Current/ Phase	Phase Resistance	Phase Inductance	Detent Torque	Thermal Resistance	Rotor Inertia	Weight	Shaft Loading	
												Radial Force	Axial Force
	Parallel	Series	Unipolar	oz-in (Nm) +/-10%	Amps DC	Ohms +/-10%	mH Typical	oz-in (Nm)	Mounted °C/Watt	oz-in-s ² (kg·m ² x 10 ³)	lb (kg)	lb (N)	lb (N)
MX111		•		850 (6.0)	1.1	3.6	16	6.0 (4.24)	7.4	0.55 (393)	10 (4.5)	25 (111)	50 (222)
MX112		•		1390 (9.82)	2.7	2.5	2.5	12 (8.47)	1.8	0.114 (806)	18 (8.2)	25 (111)	50 (222)



About Kollmorgen

Kollmorgen, a Regal Rexnord brand, has more than 100 years of motion experience, proven in the industry's highest-performing, most reliable motors, drives, linear actuators, AGV control solutions and automation platforms. We deliver breakthrough solutions that are unmatched in performance, reliability and ease of use, giving machine builders an irrefutable marketplace advantage.

www.kollmorgen.com

KOLLMORGEN

A REGAL REXNORD BRAND

Specifications are subject to change without notice. It is the responsibility of the product user to determine the suitability of this product for a specific application. All trademarks are the property of their respective owners.

KM_BR_000412_RevA_EN
©2023 Kollmorgen Corporation. All rights reserved